

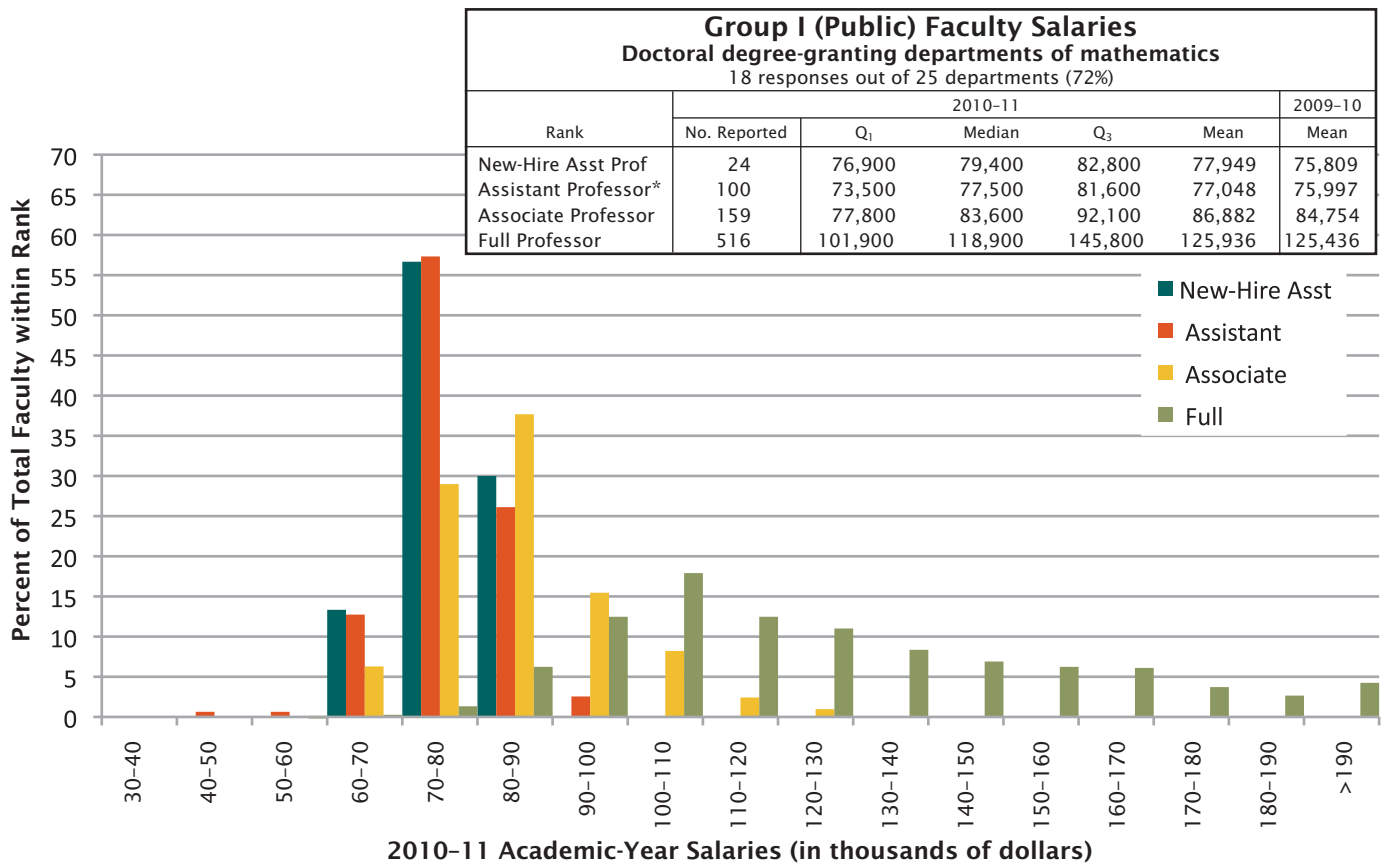
2010-2011 Faculty Salaries Report

Richard Cleary, James W. Maxwell, and Colleen Rose

This report provides information on the distribution of 2010–2011 academic-year salaries for tenured and tenure-track faculty at four-year mathematical sciences departments in the U.S. by the departmental groupings used in the Annual Survey. (See page 443 for the definitions of the various departmental groupings.) Salaries are described separately by rank. Salaries are reported in current dollars (at time of data collection). Results reported here are based on the departments which responded to the survey with no adjustment for non-response.

Departments were asked to report for each rank the number of tenured and tenure-track faculty whose 2010–11 academic-year salaries fell within given salary intervals. Reporting salary data in this fashion eliminates some of the concerns about confidentiality but does not permit determination of actual quartiles. Although the actual quartiles cannot be determined from the data gathered, these quartiles have been estimated assuming that the density over each interval is uniform.

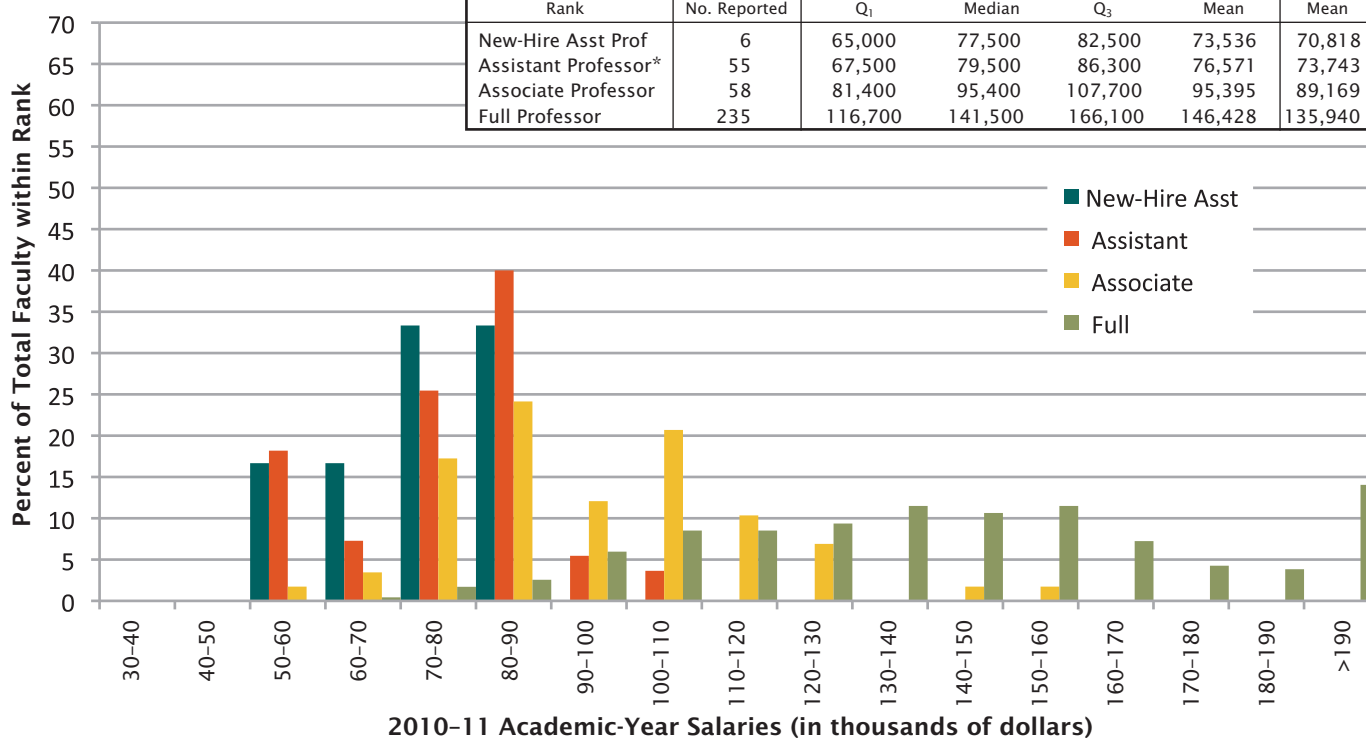
When comparing current and prior year figures, one should keep in mind that differences in the set of responding departments may be one of the most important factors in the change in the reported mean salaries.



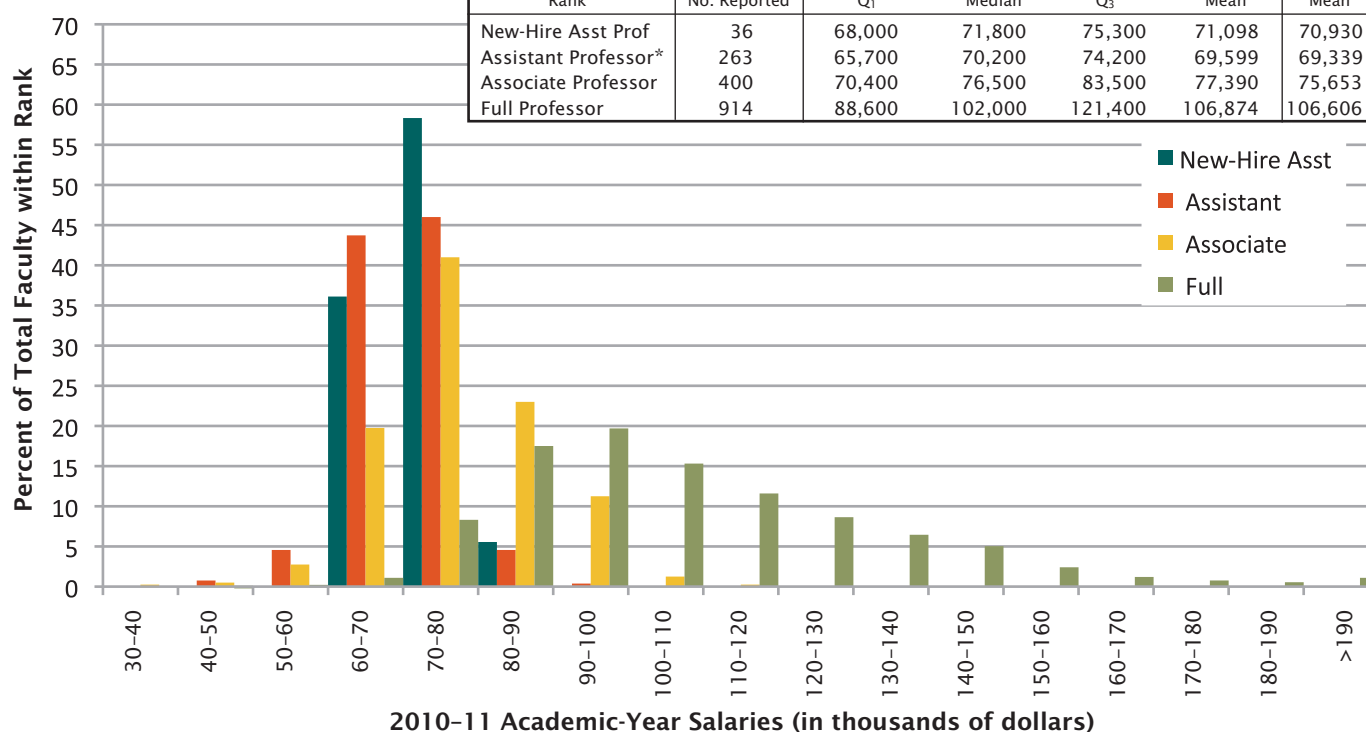
*Includes new hires.

Richard Cleary is professor and chair of the Department of Mathematical Sciences at Bentley University. James W. Maxwell is AMS associate executive director for special projects. Colleen A. Rose is AMS survey analyst.

Group I (Private) Faculty Salaries						
Doctoral degree-granting departments of mathematics						
13 responses out of 23 departments (57%)						
Rank	2010-11					2009-10
	No. Reported	Q ₁	Median	Q ₃	Mean	Mean
New-Hire Asst Prof	6	65,000	77,500	82,500	73,536	70,818
Assistant Professor*	55	67,500	79,500	86,300	76,571	73,743
Associate Professor	58	81,400	95,400	107,700	95,395	89,169
Full Professor	235	116,700	141,500	166,100	146,428	135,940

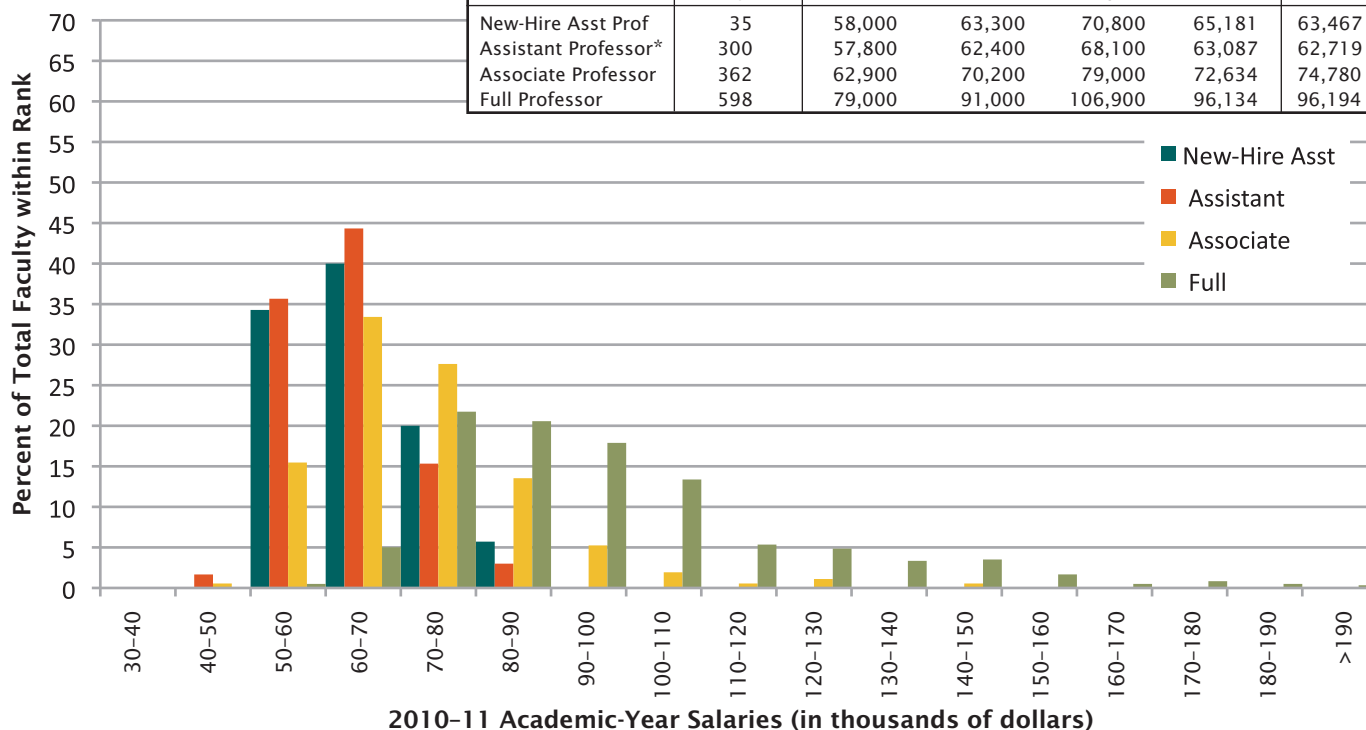


Group II Faculty Salaries						
Doctoral degree-granting departments of mathematics						
47 responses out of 56 departments (84%)						
Rank	2010-11					2009-10
	No. Reported	Q ₁	Median	Q ₃	Mean	Mean
New-Hire Asst Prof	36	68,000	71,800	75,300	71,098	70,930
Assistant Professor*	263	65,700	70,200	74,200	69,599	69,339
Associate Professor	400	70,400	76,500	83,500	77,390	75,653
Full Professor	914	88,600	102,000	121,400	106,874	106,606

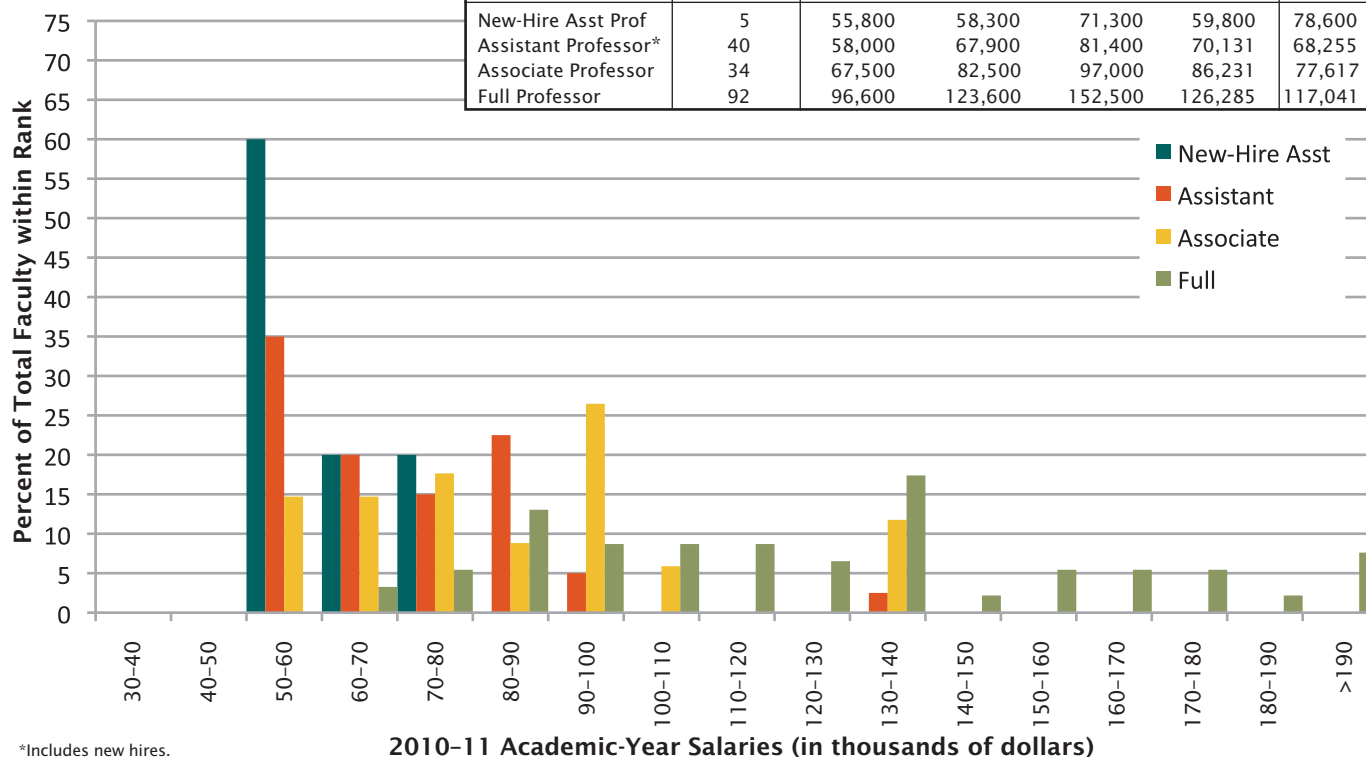


*Includes new hires.

Group III Faculty Salaries						
Doctoral degree-granting departments of mathematics						
57 responses out of 80 departments (71%)						
Rank	2010-11					2009-10
	No. Reported	Q ₁	Median	Q ₃	Mean	Mean
New-Hire Asst Prof	35	58,000	63,300	70,800	65,181	63,467
Assistant Professor*	300	57,800	62,400	68,100	63,087	62,719
Associate Professor	362	62,900	70,200	79,000	72,634	74,780
Full Professor	598	79,000	91,000	106,900	96,134	96,194

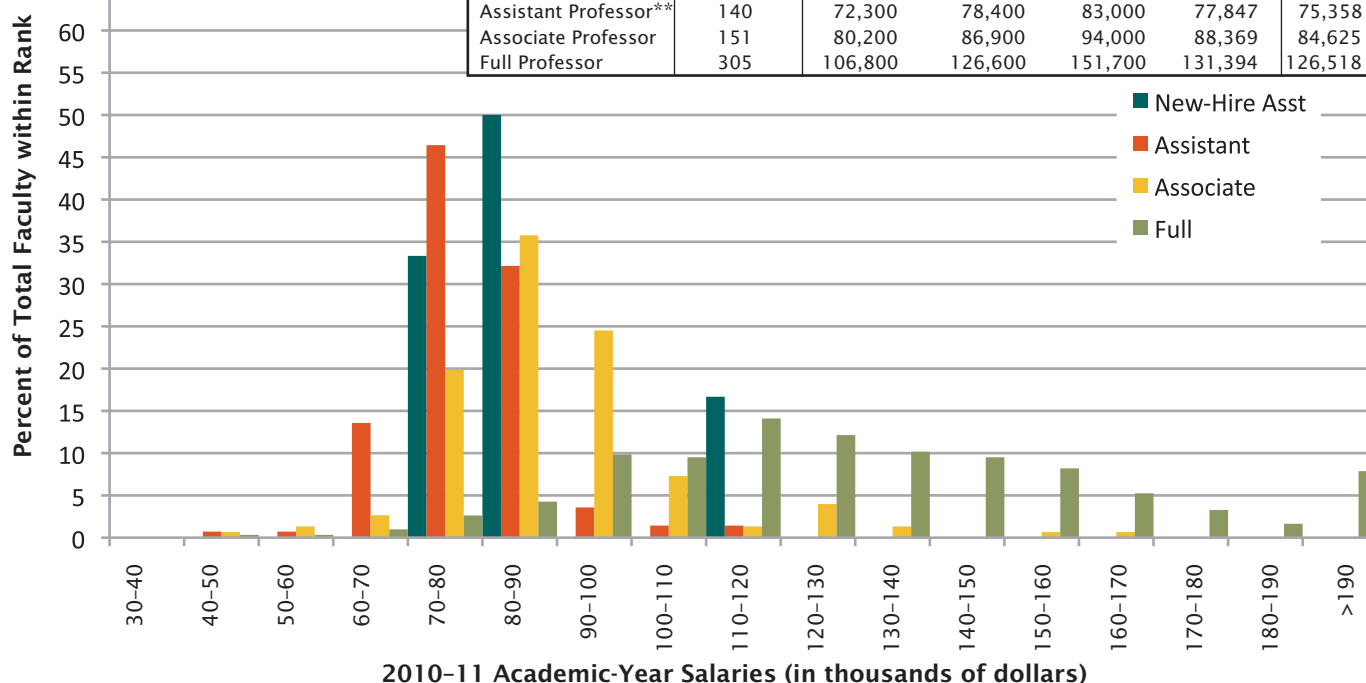


Group Va Faculty Salaries						
Doctoral degree-granting departments of applied mathematics						
11 responses out of 17 departments (65%)						
Rank	2010-11					2009-10
	No. Reported	Q ₁	Median	Q ₃	Mean	Mean
New-Hire Asst Prof	5	55,800	58,300	71,300	59,800	78,600
Assistant Professor*	40	58,000	67,900	81,400	70,131	68,255
Associate Professor	34	67,500	82,500	97,000	86,231	77,617
Full Professor	92	96,600	123,600	152,500	126,285	117,041

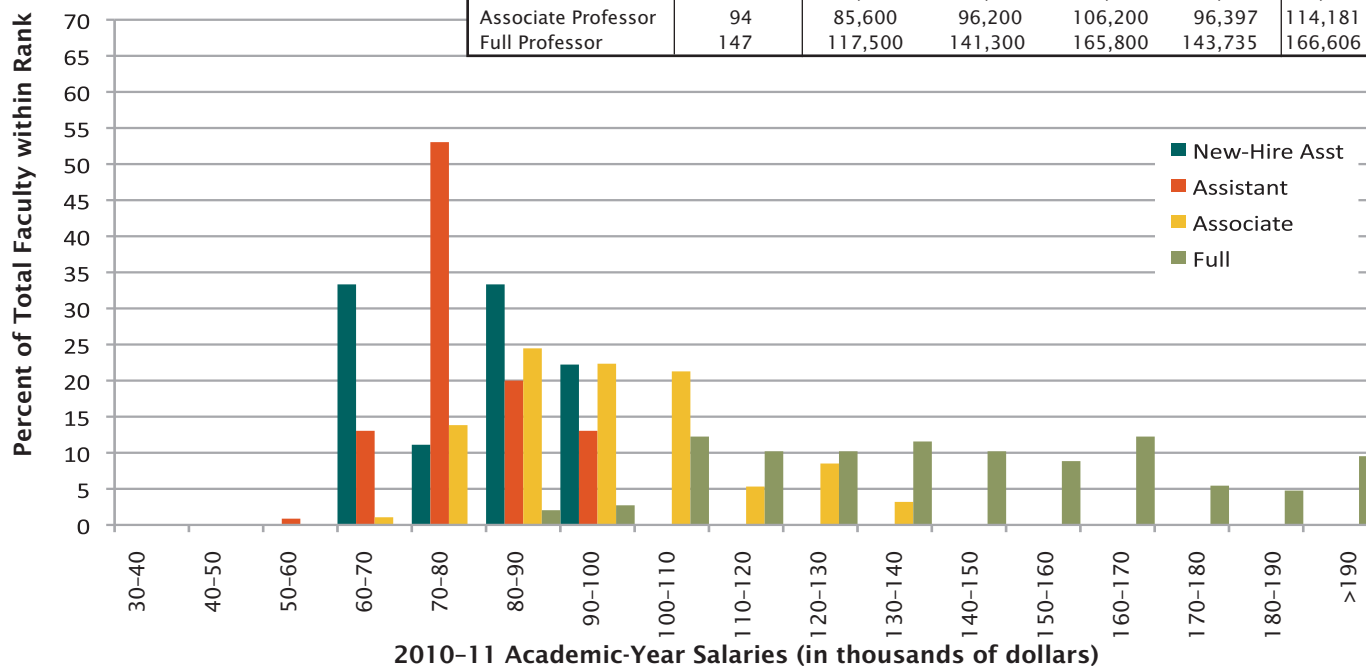


*Includes new hires.

Group IV Statistics Faculty Salaries*						
Doctoral degree-granting departments of statistics						
36 responses out of 57 departments (65%)						
Rank	2010-11					2009-10
	No. Reported	Q ₁	Median	Q ₃	Mean	Mean
New-Hire Asst Prof	6	78,300	81,900	83,800	84,000	74,625
Assistant Professor**	140	72,300	78,400	83,000	77,847	75,358
Associate Professor	151	80,200	86,900	94,000	88,369	84,625
Full Professor	305	106,800	126,600	151,700	131,394	126,518

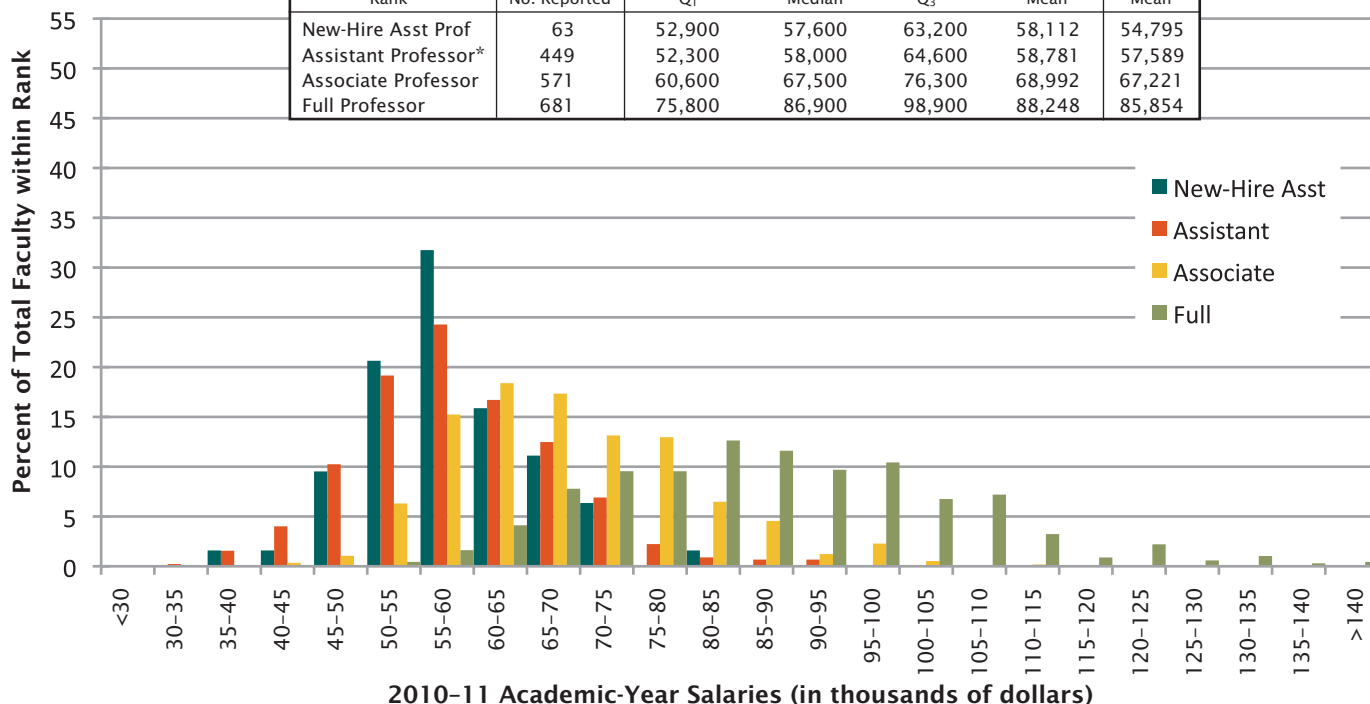


Group IV Biostatistics Faculty Salaries*						
Doctoral degree-granting departments of biostatistics						
20 responses out of 35 departments (57%)						
Rank	2010-11					2009-10
	No. Reported	Q ₁	Median	Q ₃	Mean	Mean
New-Hire Asst Prof	9	67,500	81,700	90,800	77,951	109,209
Assistant Professor**	115	71,600	75,700	84,200	77,848	93,231
Associate Professor	94	85,600	96,200	106,200	96,397	114,181
Full Professor	147	117,500	141,300	165,800	143,735	166,606

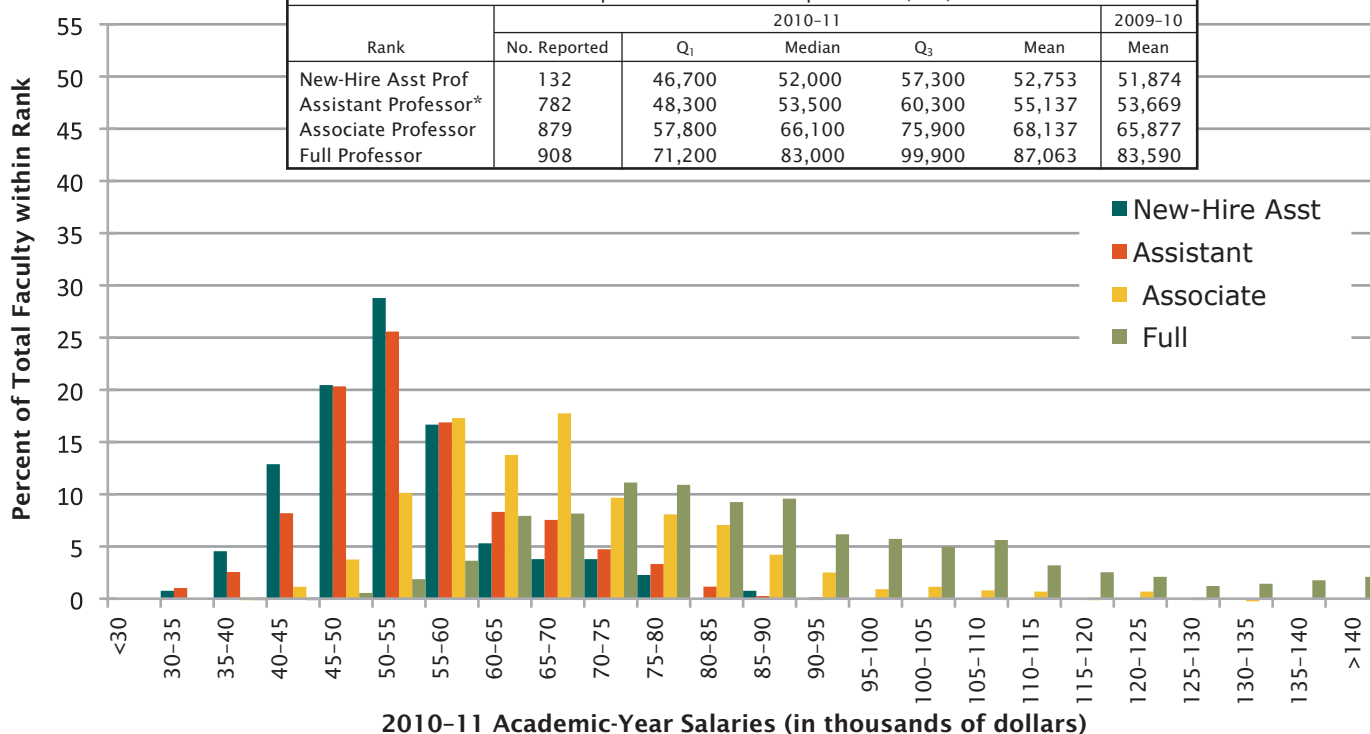


*Faculty salary data provided by the American Statistical Association.
 **Includes new hires.

Group M Faculty Salaries						
Master's degree-granting departments of mathematics						
91 responses out of 179 departments (51%)						
Rank	2010-11					2009-10
	No. Reported	Q ₁	Median	Q ₃	Mean	Mean
New-Hire Asst Prof	63	52,900	57,600	63,200	58,112	54,795
Assistant Professor*	449	52,300	58,000	64,600	58,781	57,589
Associate Professor	571	60,600	67,500	76,300	68,992	67,221
Full Professor	681	75,800	86,900	98,900	88,248	85,854



Group B Faculty Salaries						
Bachelor's degree-granting departments of mathematics						
314 responses out of 1010 departments (31%)						
Rank	2010-11					2009-10
	No. Reported	Q ₁	Median	Q ₃	Mean	Mean
New-Hire Asst Prof	132	46,700	52,000	57,300	52,753	51,874
Assistant Professor*	782	48,300	53,500	60,300	55,137	53,669
Associate Professor	879	57,800	66,100	75,900	68,137	65,877
Full Professor	908	71,200	83,000	99,900	87,063	83,590



*Includes new hires.

Other Information

Obtain a Special Faculty Salaries Analysis

See how the salaries of your department's tenured/tenure-track faculty compare to those in similar departments. The only requirement is that your department must have responded to our latest Faculty Salary survey.

Send a list of your peer institutions (a minimum of 12 institutions is required) to ams-survey@ams.org along with the date needed. (If not enough of your peer group have responded to the salary survey you'll be asked to provide additional institutions.) A minimum of two weeks is needed to complete a special analysis.

The analysis produced includes a listing of your peer group institutions along their salary survey response status, a summary table including the rank (assistant, associate, and full professor), the number reported in each rank, the 1st quartile, median, 3rd quartile, and mean salaries for each along with bar graphs.

Acknowledgements

The Annual Survey attempts to provide an accurate appraisal and analysis of various aspects of the academic mathematical sciences scene for the use and benefit of the community and for filling the information needs of the professional organizations. Every year, college and university departments in the United States are invited to respond. The Annual Survey relies heavily on the conscientious efforts of the dedicated staff members of these departments for the quality of its information. On behalf of the Data Committee and the Annual Survey Staff, we thank the many secretarial and administrative staff members in the mathematical sciences departments for their cooperation and assistance in responding to the survey questionnaires.

Previous Annual Survey Reports

The 2009 First, Second, and Third Annual Survey Reports were published in the *Notices of the AMS* in the February, August, and November 2009 issues respectively. These reports and earlier reports, as well as a wealth of other information from these surveys, are available on the AMS website at www.ams.org/annual-survey/survey-reports.

Other Sources of Data

Visit the AMS website at www.ams.org/annual-survey/other-sources for a listing of additional sources of data on the Mathematical Sciences.

Group Descriptions

Group I is composed of 48 departments with scores in the 3.00–5.00 range. Group I Public and Group I Private are Group I departments at public institutions and private institutions, respectively.

Group II is composed of 56 departments with scores in the 2.00–2.99 range.

Group III contains the remaining U.S. departments reporting a doctoral program, including a number of departments not included in the 1995 ranking of program faculty.

Group IV contains U.S. departments (or programs) of statistics, biostatistics, and biometrics reporting a doctoral program.

Group V contains U.S. departments (or programs) in applied mathematics/applied science, operations research, and management science which report a doctoral program.

Group Va is applied mathematics/applied science; **Group Vb**, which was no longer surveyed as of 1998–99, was operations research and management science.

Group M contains U.S. departments granting a master's degree as the highest graduate degree.

Group B contains U.S. departments granting a baccalaureate degree only.

Listings of the actual departments which compose these groups are available on the AMS website at www.ams.org/annual-survey/groups_des.

About the Annual Survey

The Annual Survey series, begun in 1957 by the American Mathematical Society, is currently under the direction of the Data Committee, a joint committee of the American Mathematical Society, the American Statistical Association, the Mathematical Association of America, and the Society of Industrial and Applied Mathematics. The current members of this committee are Pam Arroway, Richard Cleary (chair), Steven R. Dunbar, Susan Geller, Abbe H. Herzig, Ellen Kirkman, Joanna Mitro, James W. Maxwell (ex officio), Bart S. Ng, Douglas Ravel, and Marie Vitulli. The committee is assisted by AMS survey analyst Colleen A. Rose. In addition, the Annual Survey is sponsored by the Institute of Mathematical Statistics. Comments or suggestions regarding this Survey Report may be directed to the committee.